

# The Eden Park

Alternate Elevations



Country Chic



Modern Farmhouse

SEAFORTH  
PRESERVE

## The Eden Park

Designed for Efficient Main-Level Living

### Key Features of Base Plan

- Stunning Courtyard design offers beautiful curb appeal
- Welcoming entry foyer
- Elegant mahogany front door
- 10 foot ceiling on the first floor
- Impressive 8' solid core interior doors throughout first floor
- Versatile 1st floor flex room to design as your personal space
- Gourmet kitchen design includes large gathering island with all the latest wonderful appointments
- Spacious walk in pantry
- Sizeable mud room with convenient drop zone
- Generous laundry room with cabinetry
- Luxury owner's suite with private entry
- Beautiful owner's bath includes a free standing tub

- Charming screened back porch for outdoor living
- The well designed second floor includes 4 bedrooms, hall bath, buddy bath and a perfect size gathering area

### Available Luxury Options

- Guest suite in lieu of flex room
- Bedroom 4 & 5 optional layout
- Screened back porch with cozy fireplace
- Screened back porch with grilling deck
- Tall panel sliding glass doors off the family room
- Generous bonus room over the two or

SEAFORTH  
PRESERVE

## The Eden Park



Eastern Seaboard Elevation

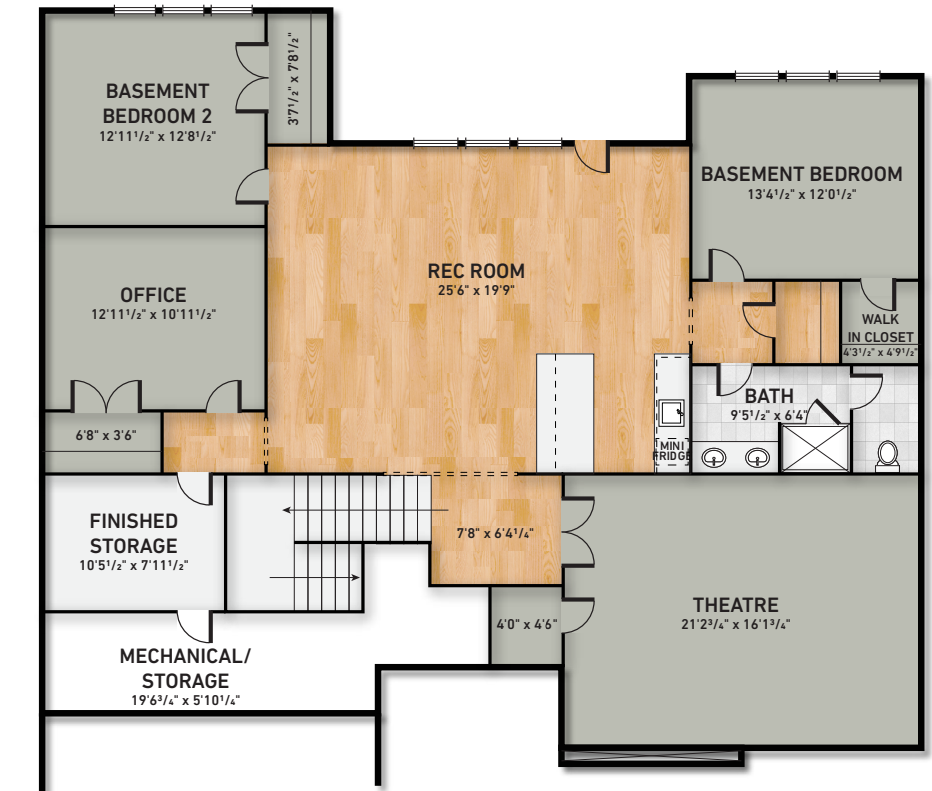
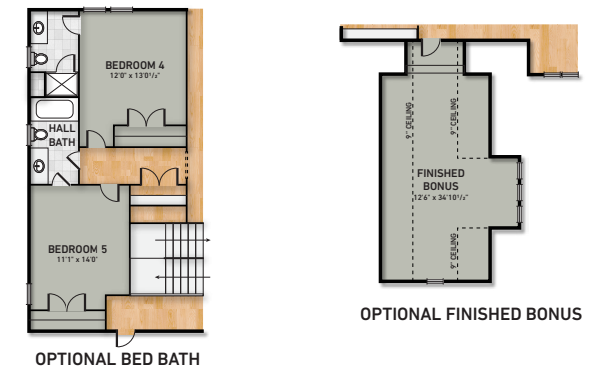
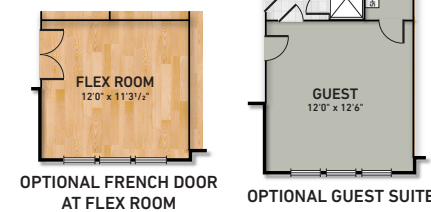
ROBUCK  
HOMES *Since 1926*



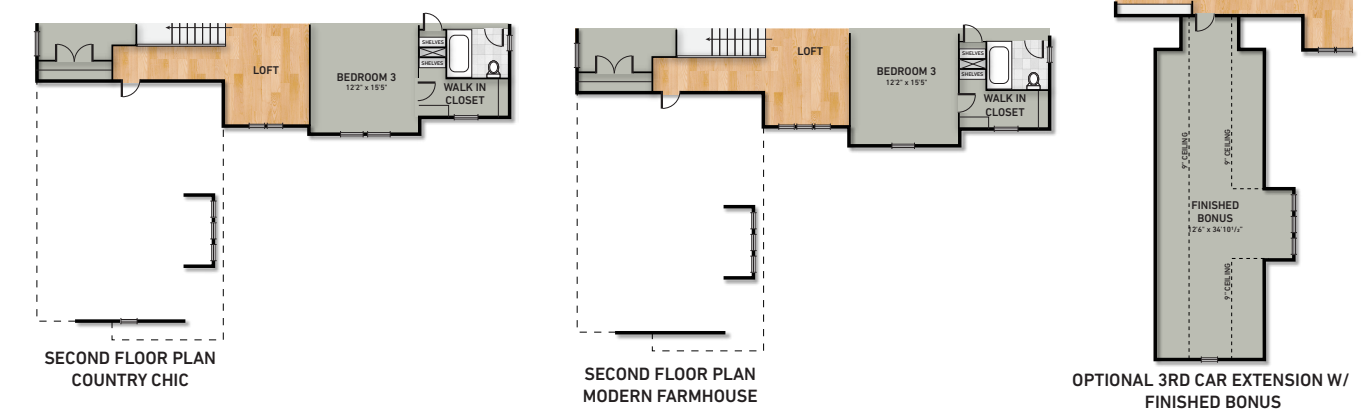
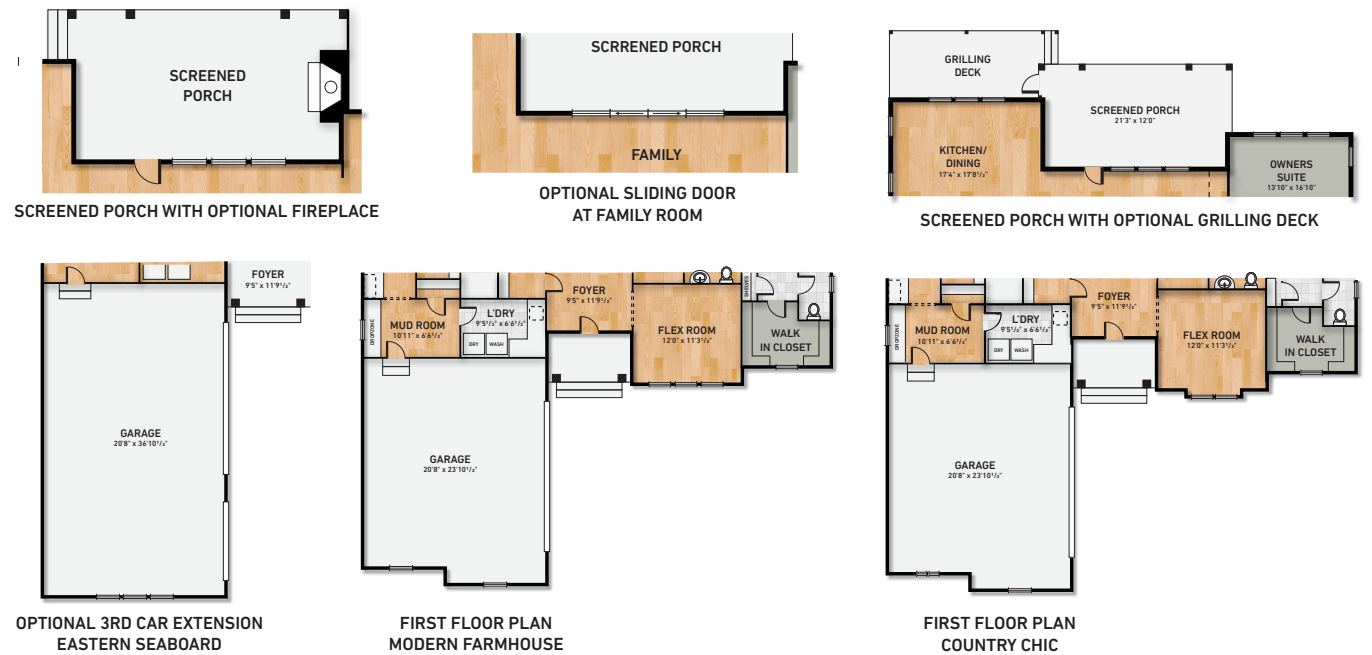
[www.RobuckHomes.com](http://www.RobuckHomes.com)

FMB  
FONVILLE MORISEY BAREFOOT

# The Eden Park



**BASEMENT PLAN**  
\* Basement Options are not available in Bonterra



\* Every precaution has been taken to verify the accuracy of the above details. However, prospective purchasers are advised to make their own inquiries. Builder reserves the right to make substitutions in products and materials of equal or greater value. All items are subject to change without notice. We do not accept responsibility for any errors or omissions. July 2022.