

The Graylyn

Alternate Elevations



Country Chic



Modern Farmhouse

SEAFORTH
PRESERVE

The Graylyn

Well Equipped to Support Your Busy Lifestyle

Key Features of Base Plan

- Stunning Courtyard design offers an impressive curb appeal
- Welcoming entry includes an elegant mahogany front door
- 12 foot ceilings in kitchen, family & dining
10 foot ceilings on rest of first floor
- Impressive 8' solid core interior doors throughout first floor
- Versatile 1st floor flex room to design as your personal space
- Gourmet kitchen design with all the latest appliances and large gathering island
- Inviting screened back porch for outdoor living
- Spacious walk in pantry
- Large mud room with convenient drop zone
- Luxury owner's suite with private entry
- Generous laundry room with cabinetry and a separate door to the owner's retreat

- Beautiful Owner's bath with a free standing tub
- Large walk in closet has wood shelving
- The well designed second floor includes 3 bedrooms, hall bath, buddy bath and a flexible loft space

Available Luxury Options

- Guest suite in lieu of flex room
- Grilling deck
- Screened back porch with fireplace
- Tall panel Sliding glass doors off the family room
- Generous finished bonus room over the two or three car garage
- Entertainment bump out

SEAFORTH
PRESERVE

The Graylyn



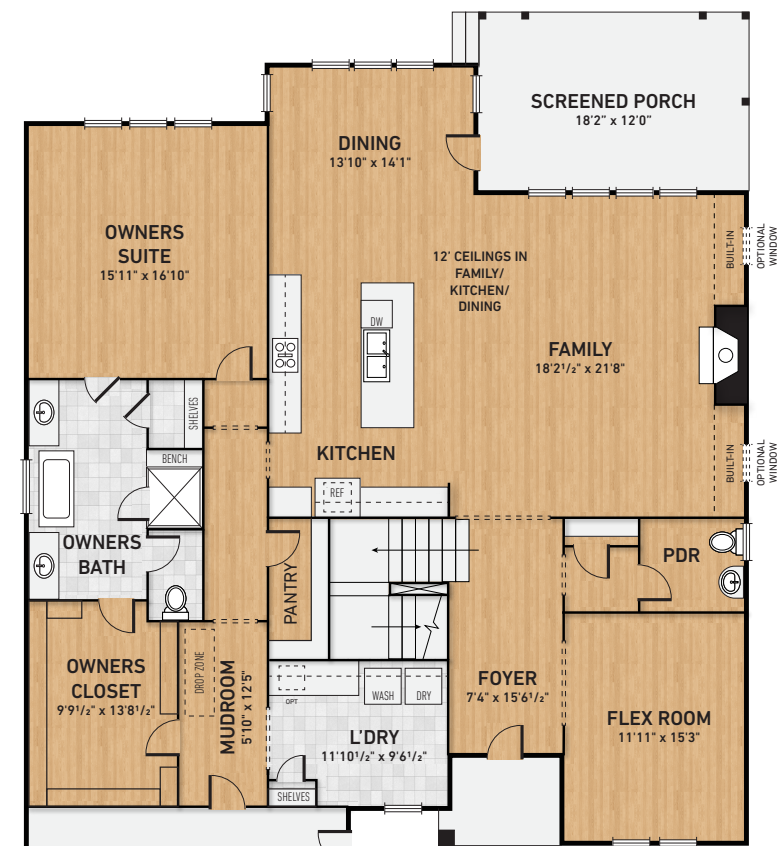
Eastern Seaboard Elevation

ROBUCK
HOMES *Since 1926*

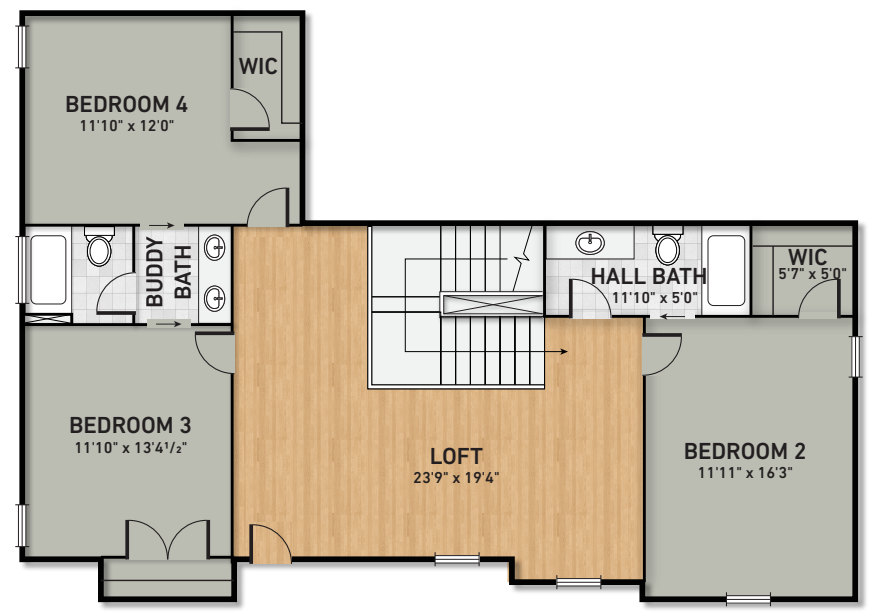
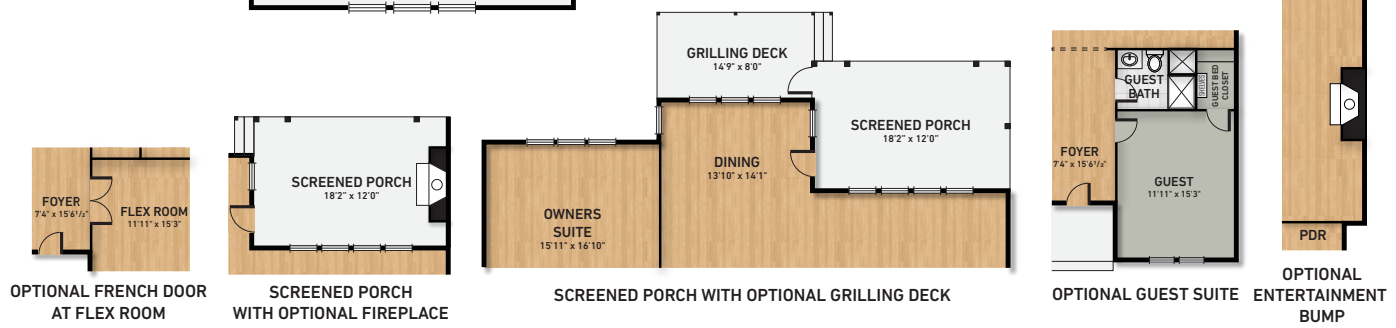


www.RobuckHomes.com

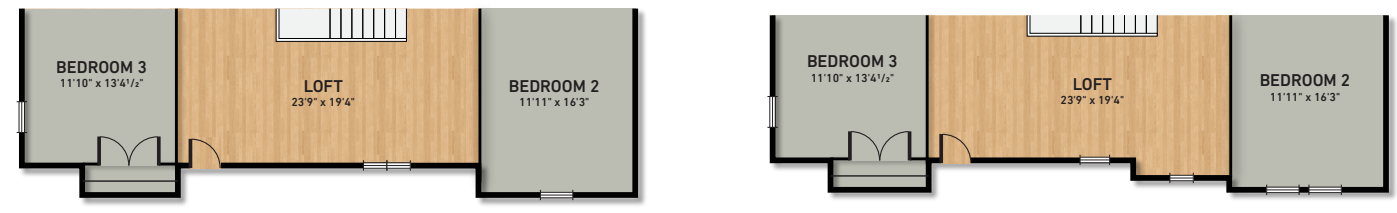
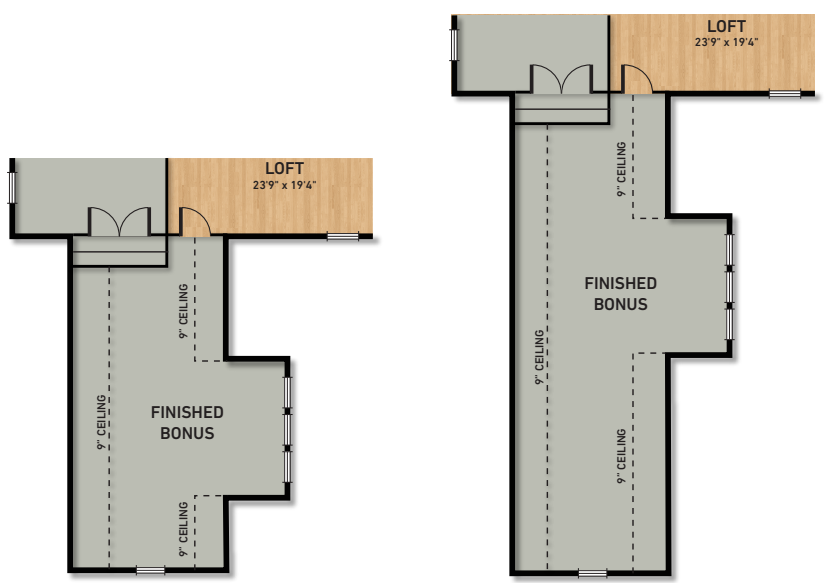
FMB
FONVILLE MORISEY BAREFOOT



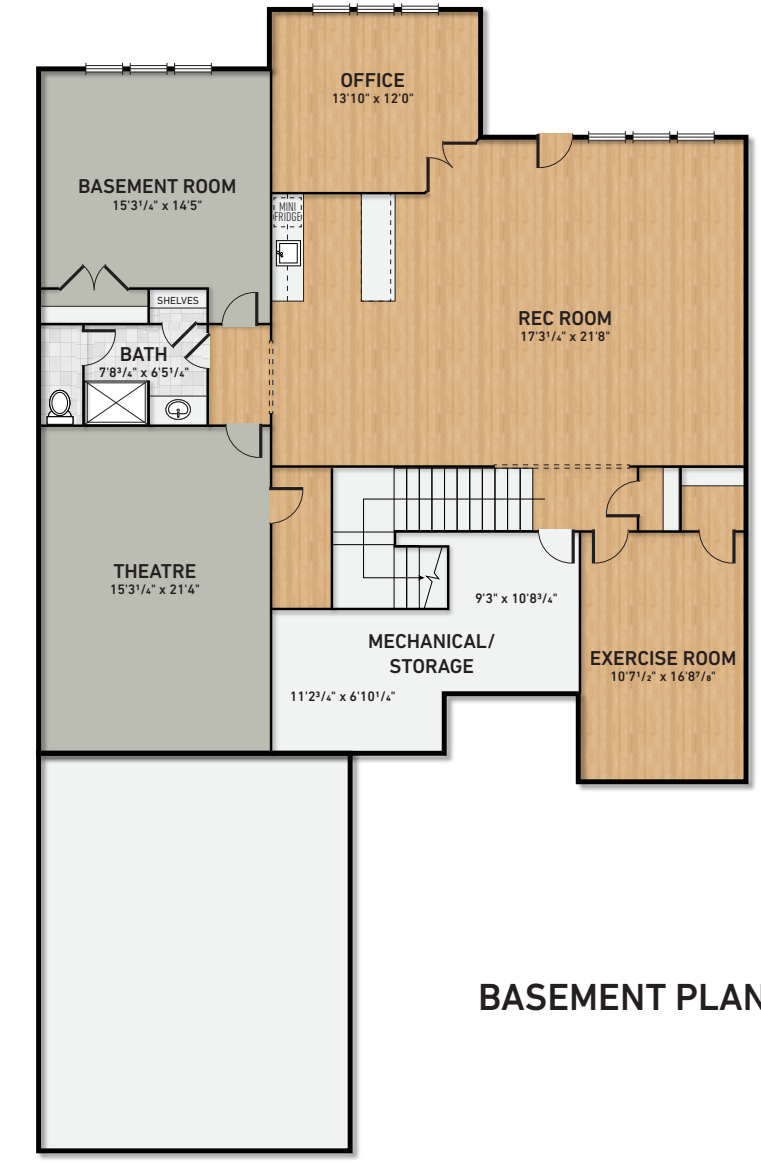
FIRST FLOOR PLAN



SECOND FLOOR PLAN



The Graylyn



BASEMENT PLAN