

Laurel Ridge

THE ESTATES

SOPHISTICATION • PRIVACY • CONVENIENCE



Triple A Homes

THE LAUREL

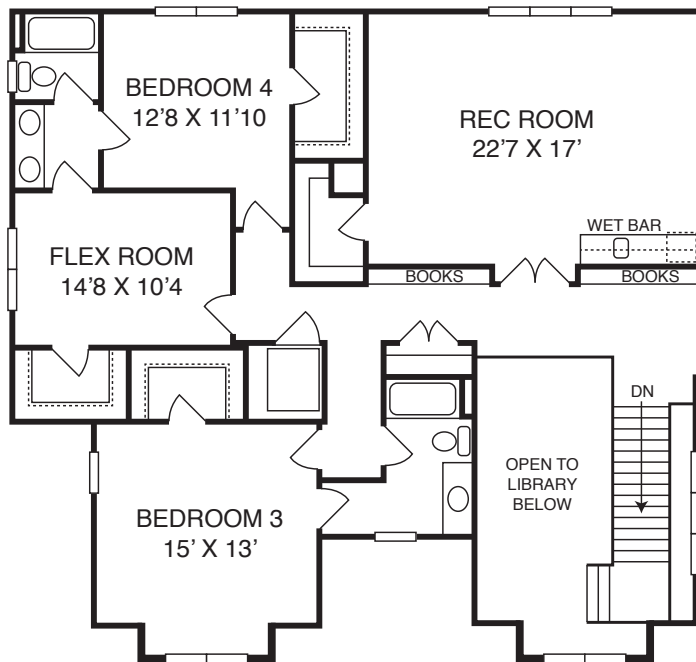
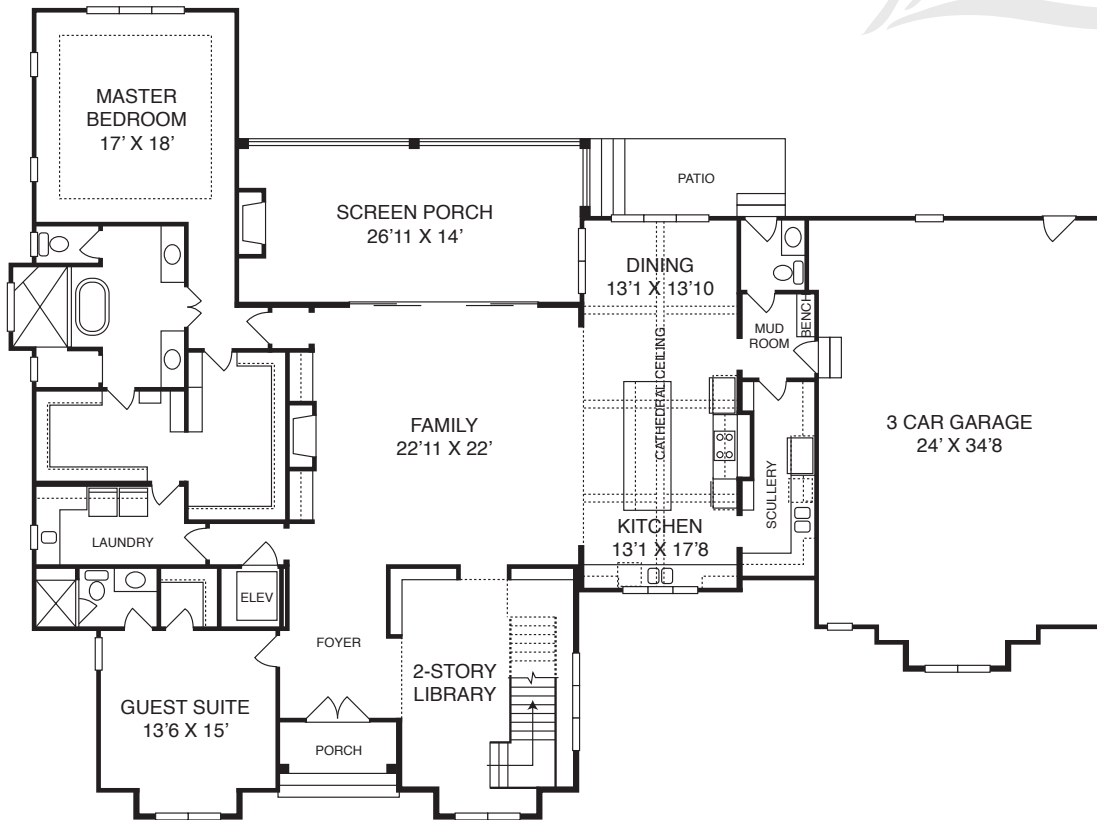
Homesite 45 // 334 Blufftonwood Drive • Pittsboro, NC

4 BDR // 4.5 BA // 4578 SF // 8.1 Acres

First Floor Owner's Retreat // First Floor Private Guest Suite

Gourmet Kitchen with Scullery Kitchen // Screen Porch with Fireplace // 3 Car Garage

MLS# 2506213 // \$1,575,000



Triple A Homes

THE LAUREL